

LINK-J aims to build an information-exchange infrastructure for everyone working in the life sciences.
We provide a range of opportunities for the creation of a wholly new life science industry.



We have various spaces that members can use for conferences, study meetings, seminars, events, meetings, parties, etc.

We not only organize a variety of events and programs, but build unparalleled networks.



Communication lounge



Conference room



Networking night with supporters



ZENTECH DOJO NIHONBASHI

Building global innovation through links with life science clusters in Japan and abroad.



Communication lounge



Foyer

LINK-J Special Membership (not subject to consumption tax)

<https://www.link-j.org/>

A *1	Initiation fee	100,000 yen
	Annual fee	500,000 yen
B *2	Initiation fee	30,000 yen
	Annual fee	120,000 yen

C *3	Initiation fee	2,000 yen
	Annual fee 1	Doctors, corporate practitioners and employees, other individuals 30,000 yen
	Annual fee 2	Practitioners and employees of nonprofit organizations, etc. that fall under Special Membership B, 2) 5,000 yen
	Annual fee 3	University undergraduate and graduate students 3,000 yen

*1. Firms with more than 100 employees
*2. 1) Firms with 100 employees or fewer
2) Nonprofit organizations (independent administrative agencies, national research and development corporations, government agencies, educational corporations, general corporations, public-service corporations, social-welfare corporations, diplomatic missions in Japan, etc.)
*3. Special Membership C does not include exclusive reservation of the communication lounge or use of the conference rooms and temporary working rooms.



Nihonbashi is in the heart of Tokyo, an attractive urban environment with an abundance of businesses and hotels.
This town is also garnering ample attention as a base for the life sciences.
Within walking distance of Tokyo Station and accessible by multiple modes of transportation, this location offers vast business potential.



Nihonbashi Life Science Building

2-3-11, Nihonbashi-honcho, Chuo-ku, Tokyo, 103-0023

<ul style="list-style-type: none"> ■ Tokyo Metro Ginza and Hanzomon Lines 3 min. walk from Mitsukoshimae Sta. [Exit A6] ■ JR Yamanote, Keihin-Tohoku, and Chuo Rapid Lines 11 min. walk from Kanda Sta. [South Exit] 	<ul style="list-style-type: none"> ■ JR Sobu Rapid Line 2 min. walk from Shin-Nihonbashi Sta. [Exit 5] ■ JR Sobu Rapid Line 13 min. walk from Tokyo Sta. [Nihonbashi Exit]
--	--

Nihonbashi Life Science HUB

1-5-5, Nihonbashi-muromachi, Chuo-ku, Tokyo, 103-0022

<ul style="list-style-type: none"> ■ Tokyo Metro Ginza and Hanzomon Lines Directly connected to Mitsukoshimae Sta. ■ JR Yamanote, Keihin-Tohoku, and Chuo Rapid Lines 9 min. walk from Kanda Sta. [South Exit] 	<ul style="list-style-type: none"> ■ JR Sobu Rapid Line Directly connected to Shin-Nihonbashi Sta. ■ JR Yamanote, Keihin-Tohoku, and Chuo Rapid Lines 9 min. walk from Tokyo Sta. [Nihonbashi Exit]
--	---

Nihonbashi Life Science Building 2

3-11-5, Nihonbashi-honcho, Chuo-ku, Tokyo, 103-0023

<ul style="list-style-type: none"> ■ JR Sobu Rapid Line 3 min. walk from Shin-Nihonbashi Sta. [Exit 5] ■ Tokyo Metro Ginza and Hanzomon Lines 5 min. walk from Mitsukoshimae Sta. [Exit A10] 	<ul style="list-style-type: none"> ■ Tokyo Metro Hibiya Line 3 min. walk from Kodemachio Sta. [Exit 3] ■ JR Yamanote, Keihin-Tohoku, and Chuo Rapid Lines 11 min. walk from Kanda Sta. [South Exit]
--	---

Inquiries

Tel: 03-6214-3086

Reception time: 9:00-21:00 (in Nihonbashi Life Science HUB)

Inquiries about LINK-J membership

Tel: 03-3241-4911

Reception time: 9:00-17:00 / excl. Saturdays, Sundays, company holidays



Expand your network through events and conferences in Nihonbashi, Tokyo, a gathering spot for the latest knowledge and information in the life sciences.



A life science business base, Nihonbashi, Tokyo **Conference Room**



Nihonbashi Life Science Building

Conference room / Meeting room / Communication lounge / Temporary working room

A variety of large and small conference rooms for meetings by small numbers of people and for holding events for 150 participants.

In the 10F communication lounge, which can be used exclusively, parties can be held using the catering service.



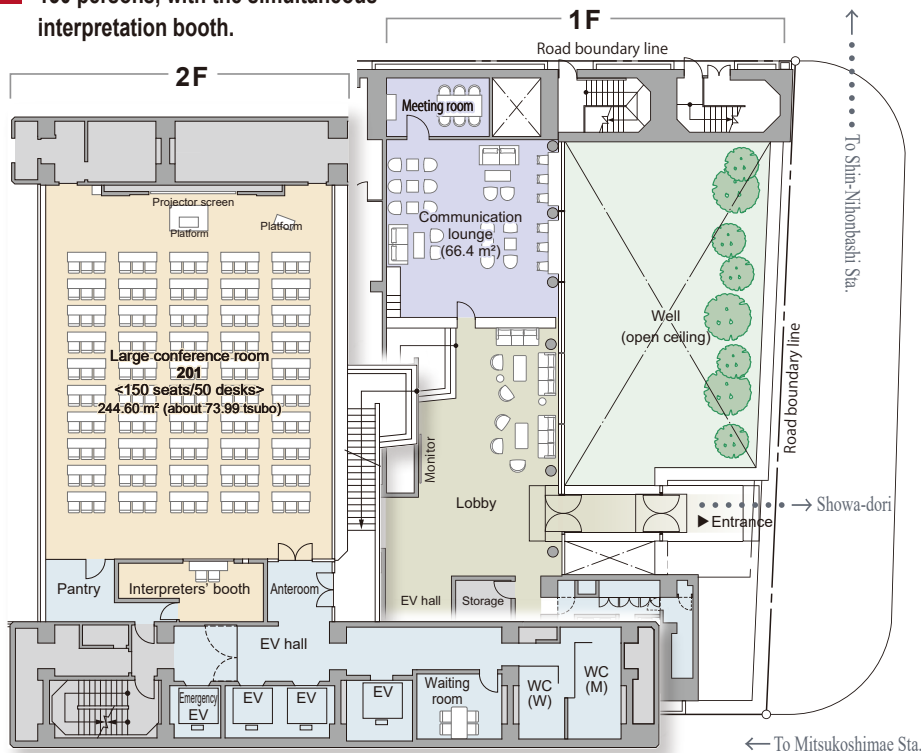
Appearance

2F

The conference room, which is capable of accommodating up to 150 persons, with the simultaneous interpretation booth.

1F

The communication lounge with an open ceiling and a comfortable lobby.



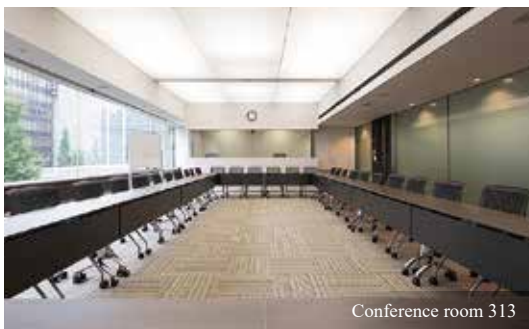
Communication lounge (1F)



Conference room 1004



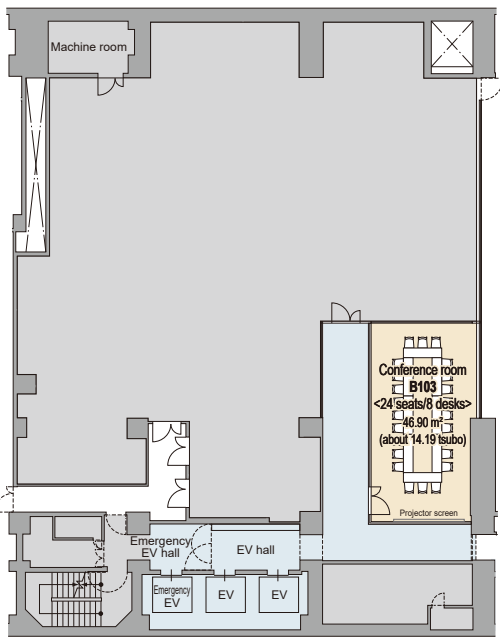
Large conference room 201



Conference room 313

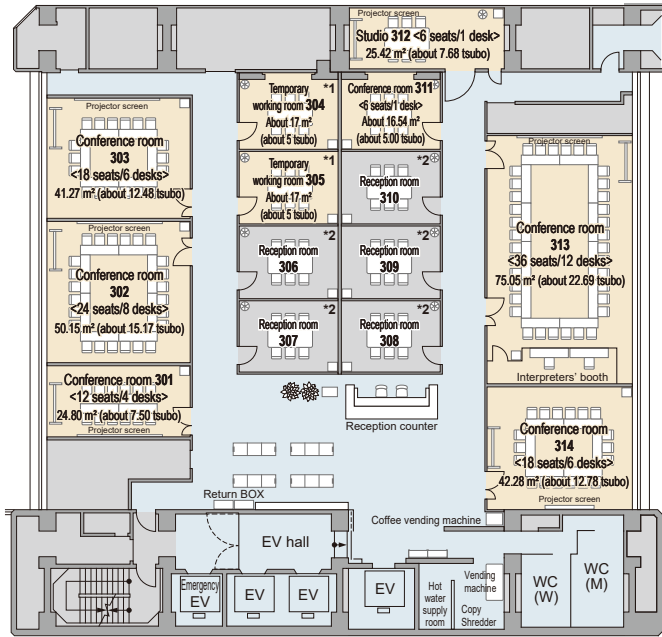
B1

Conference room accommodating 24 persons with a permanently installed projector.



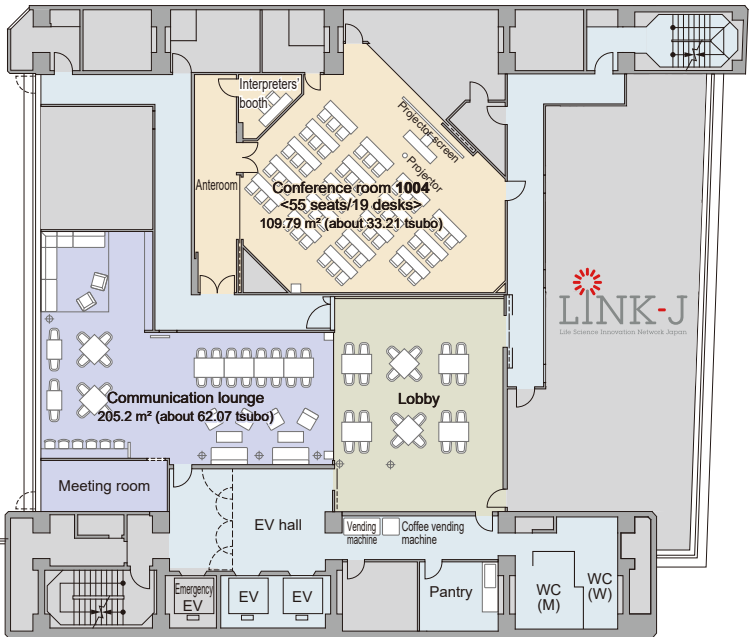
3F

A variety of large and small conference rooms accommodating 6 to 36 persons. Safe hospitality by manned reception.



10F

The lounge can be used as a place of exchange with LINK-J members and as an individual workplace. It can also be used exclusively, for social gatherings or parties using the catering service.



(Excluding tax, yen/hour)	Special Membership A	Special Membership B
■ Conference room B103	5,000 yen	2,500 yen
■ Large conference room 201	45,000 yen	22,500 yen
■ Conference room 301	3,500 yen	1,750 yen
■ Conference room 302	5,000 yen	2,500 yen
■ Conference room 303	4,000 yen	2,000 yen
■ Conference room 311	3,000 yen	1,500 yen
■ Studio 312	3,000 yen	1,500 yen
■ Conference room 313	7,000 yen	3,500 yen
■ Conference room 314	4,000 yen	2,000 yen
■ Conference room 1004	15,000 yen	7,500 yen
■ Communication lounge *3 (10F)	30,000 yen	15,000 yen

*3/For exclusive use

* An hourly charge for the room will be charged as an extra charge for any change from this layout. Please refer to the user guidelines for details.

(Excluding tax, yen/day)	Special Membership A	Special Membership B
■ Temporary working rooms 304/305	20,000 yen	10,000 yen

*1/The conference room for extended use, which can be used for up to 7 days on a daily basis.

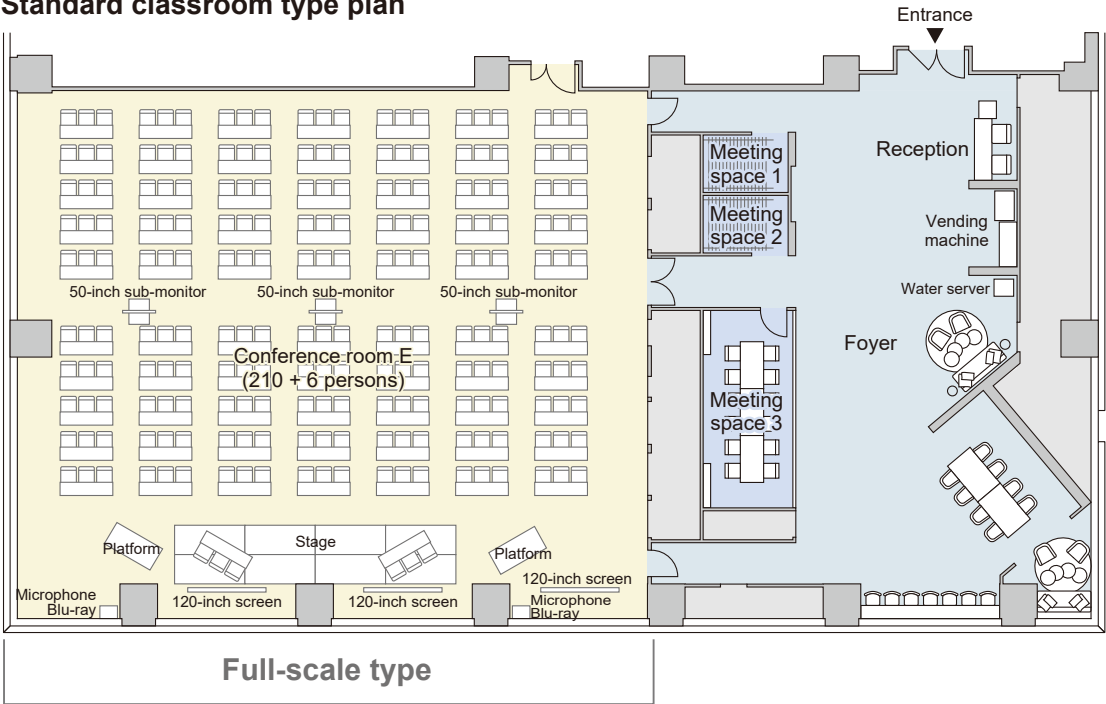
*2/Available only to persons residing in the Nihonbashi Life Science Building.

Conference room

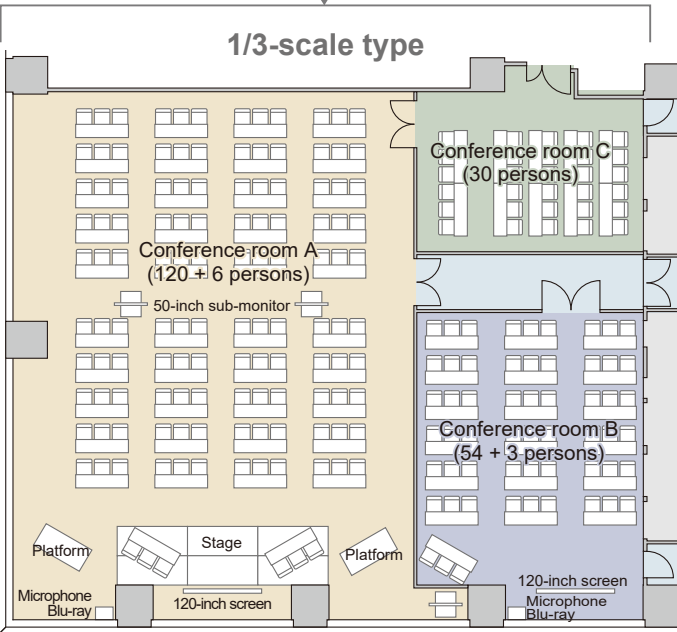
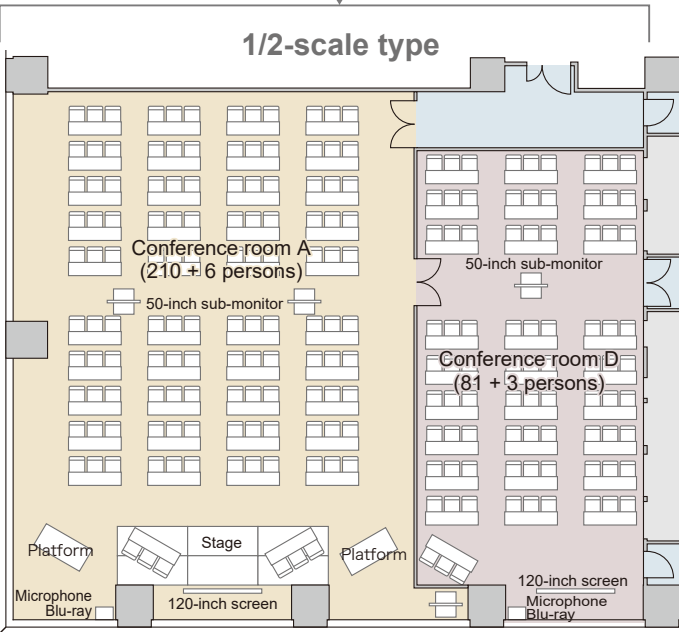
Good access with a direct connection to Mitsukoshimae Station on the Tokyo Metro Ginza Line/Hanzoumon Line.
Safe hospitality with a manned reception.
The conference room available for large-scale events such as symposiums, which can accommodate up to 300 persons.
The foyer can be used exclusively for social gatherings and parties.

8F

Standard classroom type plan



The room can be used in divided use.



*1 A meeting space that is available for any customer. Reservations are not available. Please do not use the space for extended periods of time except when using Conference Room E.
*2 This is an image of a changed layout available for an additional one hour's charge for the room. Please refer to the user guidelines for details.



Available for parties.
We can introduce catering services, so please feel free to ask us.

(Excluding tax, yen/hour)	Special Membership A	Special Membership B
Full-scale plan <Conference Room E> (A + B + C)	77,000 yen	38,500 yen
1/2-scale plan <Conference room A>	49,000 yen	24,500 yen
1/2-scale plan <Conference room D> (B + C)	28,000 yen	14,000 yen
1/3-scale plan <Conference room B>	17,000 yen	8,500 yen
1/3-scale plan <Conference room C>	11,000 yen	5,500 yen

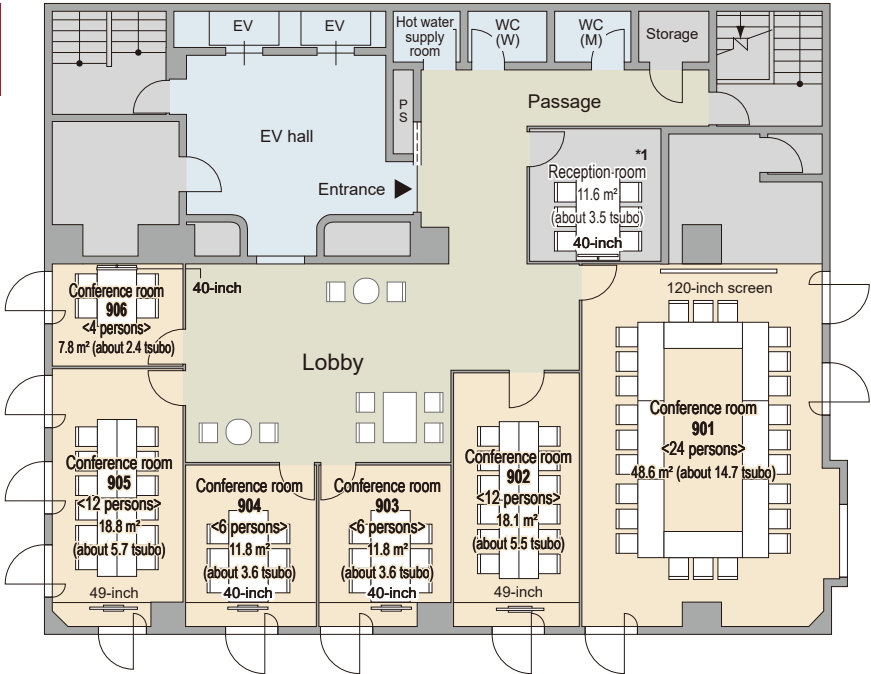
The entrance on the first floor is closed on and after 7:00 p.m. on weekdays and weekends and holidays. You can enter the floor by using the numeric keypad on floor B1.

Nihonbashi Life Science Building 2

Conference room

A variety of large and small conference rooms accommodating 6 to 24 persons, with permanently installed monitors, projector screens, and white boards.

9F



*1/Available only to the residents of Nihonbashi Life Science Building 2.

Smart Kaigisitsu

This conference room can be reserved from the dedicated reservation system “Smart Kaigisitsu.”

The reservation procedure is different from the procedures for reserving the conference rooms in the Nihonbashi Life Science Building and the Nihonbashi Life Science HUB. Operate your mobile phone in front of the door to unlock the door.



List of equipment available in conference rooms

Nihonbashi Life Science Building

Name of equipment	Conference room and quantity	Additional rental fee
Desk	All rooms (the standard equipment is as shown in the drawing on the left)	400 yen/piece
Chair	All rooms (the standard equipment is as shown in the drawing on the left)	200 yen/piece
White board	All rooms/1 piece for each	1,000 yen/piece
Projector	201/1004/10F lounge/1 piece for each	10,000 yen/piece
Pointer	—	500 yen/piece
Screen (floor-stand type)	The standard equipment is available for all rooms/ 1 screen for each (excluding 311)	5,000 yen/piece
TV conference system (the projector is available separately)	—	30,000 yen/piece
Wireless microphone	201/1004/4 for each: 10F lounge/2 pieces	—
Wired microphone	201/4 pieces, 1004/2 pieces	—
Earphone-type microphone	10F lounge/2 pieces	—
Platform	201/2 pieces	—
Platform	201/2 pieces	—
Wired LAN	1 line for each (2 lines for 201/1004)	—
Wireless LAN	201/10F lounge	—
Sign stand	—	1,000 yen/piece
Microphone stand (desktop type/floor-stand type)	201/2 pieces 10F lounge/1 piece	—

Nihonbashi Life Science HUB

Name of equipment	Quantity	Remarks
Desk	81 pieces	
Chair	300 pieces	
Stage	8 pieces	A/6 pieces E/8 pieces
White board	3 pieces	A/B/C/1 piece for each
Projector	3 pieces	
Pointer	2 pieces	
Screen	3 screens	
Sub-display	3 pieces	
Wireless microphone	7 pieces	A/4 pieces B/D/3 pieces E/7 pieces
Blu-ray player	2 pieces	A/B/D/1 piece for each E/2 pieces
Wireless LAN	Built-in	
Microphone stand (desktop type/floor-stand type)	2 pieces for each	A/B/D/1 piece for each E/2 pieces
Platform	2 pieces	A/B/D/1 piece for each E/2 pieces

Nihonbashi Life Science Building 2

Name of equipment	Conference room	Remarks
Monitor	902/903/904/905/906	40-inch or 49-inch
HDMI/VGA connection	All rooms	—
Screen	901	267 × 150 cm (49 inches)
Projector	901	3,300 1 m
White board	All rooms	Wall-integrated type
Clock	All rooms	—



	Special Membership A	Special Membership B
(Excluding tax, yen/hour)		
■ Conference room 901	5,000 yen	2,500 yen
■ Conference room 902	3,500 yen	1,750 yen
■ Conference room 903	3,000 yen	1,500 yen
■ Conference room 904	3,000 yen	1,500 yen
■ Conference room 905	3,500 yen	1,750 yen
■ Conference room 906	2,000 yen	1,000 yen

Please refer to the user guidelines for details.

User Guidelines

Day of Use

Whole day (except the year-end and New Year holidays from December 28 to January 3)

* The rooms may be closed temporarily for repair and inspection works of the facility.

Operation Time

From 9:00-21:00

* From 9:00-17:00 only for Conference Room 1004 of the Nihonbashi Life Science Building

Receipt of Application

<Nihonbashi Life Science Building, Nihonbashi Life Science HUB>

○ From the day one year prior to the day of use to two days prior to the day of use

<Nihonbashi Life Science Building 2>

○ From the day one year prior to the day of use to the day of use

Cancellation of Reservation

If a reservation is to be cancelled for the customer's convenience, the following cancellation fee will be applied, with the day of use as the initial day.

○ From 30 days to 15 days prior to the day of use: 50% of the original fee to be charged

○ From 14 days prior to the day of use to the day of use: 100% of the original fee to be charged

* Please refer to the user guidelines for details. The operation method may be subject to future changes.

Available for parties.

We can arrange catering services, so please feel free to ask us.

Flow of Use

A separate application for LINK-J membership will be necessary.

The use of each facility is limited to “use for the purposes of the development the life science industry in a large sense.” Applications from customers with Special Membership A and B only will be accepted. As a general rule, the use of the facility is limited to conferences and seminars hosted or co-hosted by the special member him/herself.

Use the reservation system for reservations for this conference room.

Nihonbashi Life Science Building / Nihonbashi Life Science HUB

Reservations are made by using the dedicated reservation system.

- Present the reservation system registration application form to Nihonbashi Life Science HUB (e-mails accepted).**
* The users are limited to corporations, and applications for use by individual persons will not be accepted.
- Reception of Registration for Use of Conference Room**
● Your ID and password are issued after registration procedures are done by the facility staff.
● Please verify the reservation state on the dedicated page notified when the ID and the password are issued, and then make a reservation for the conference room.
- Reservation for Conference Room**
● Please verify the reservation state on the dedicated page, and then make a reservation for the conference room.
- On the Day of Use**
● On the day of use, please come directly to the reserved conference room.
* If you would like a preview of the room or instructions on the use of the equipment, please ask the staff at the reception before use.

Nihonbashi Life Science Building 2

Make a reservation by using the dedicated reservation system “Smart Kaigisitsu.”

- Please apply in advance for the registration of your account on the dedicated page.**
- Reservation for Conference Room**
● Please verify the reservation state on the dedicated page, and then make a reservation for the conference room.
- On the Day of Use**
● On the day of use, operate your mobile phone in front of the door to the conference room to unlock the door.
● The electronic lock installed in the door will react, and the door will be unlocked.

List of Conference Room Use Fees

Nihonbashi Life Science Building

Room name	Area: m² (tsubo)	Capacity (number of persons)			Fee [excluding tax] (yen)/hour	
		Classroom type	Square type ^{*1}	Island type ^{*1}	Special Membership A	Special Membership B
B1 Conference room B103	47.10 m² (about 14.24 tsubo)	24 persons	24 persons	18 persons	5,000 yen	2,500 yen
2F Large conference room 201 ^{*2}	244.60 m² (about 73.99 tsubo)	150 persons	90 persons ^{*3}	144 persons	45,000 yen	22,500 yen
Conference room 301	24.80 m² (about 7.50 tsubo)	12 persons	12 persons	12 persons	3,500 yen	1,750 yen
Conference room 302	50.15 m² (about 15.17 tsubo)	24 persons	24 persons	18 persons	5,000 yen	2,500 yen
Conference room 303	41.27 m² (about 12.48 tsubo)	18 persons	18 persons	18 persons	4,000 yen	2,000 yen
3F Conference room 311	16.54 m² (about 5.00 tsubo)	—	—	6 persons	3,000 yen	1,500 yen
Studio 312 (Soundproof specifications)	25.42 m² (about 7.68 tsubo)	—	—	6 persons	3,000 yen	1,500 yen
Conference room 313 ^{*2}	75.05 m² (about 22.69 tsubo)	36 persons	36 persons	27 persons	7,000 yen	3,500 yen
Conference room 314	42.28 m² (about 12.78 tsubo)	18 persons	18 persons	18 persons	4,000 yen	2,000 yen
10F Conference room 1004 ^{*2}	109.79 m² (about 33.21 tsubo)	55 persons	36 persons	46 persons	15,000 yen	7,500 yen

*1 Because a change in the layout is necessary, the fee for one hour's use of the room will be charged separately. (If the layout is to be changed by the customer during the reserved hours, no extra fee for changing the layout will be charged. Please restore the layout to the original state after use.)

*2 Equipped with a simultaneous interpreters' booth

*3 Double reversed C-like layout

Communication lounge

10F lounge ^{*4}	205.2 m² (about 62.07 tsubo) ^{*5}	—	—	—	30,000 yen	15,000 yen
1F lounge ^{*6}	80.99 m² (about 24.50 tsubo)	—	—	—	—	—

*4 This lounge is a space for the exclusive use of LINK-J members, except when it is used exclusively.

*5 The area usable by exclusive reservation is about 36 tsubo, excluding the lobby.

*6 For temporary use only

Temporary working room

* Available on a daily basis.

Room name	Area: m² (tsubo)	Capacity (number of persons)	Fee [excluding tax] (yen)/day	
			Special Membership A	Special Membership B
Room 304	About 17 m² (about 5.22 tsubo)	6 persons	20,000 yen	10,000 yen
Room 305	About 17 m² (about 5.08 tsubo)	6 persons	20,000 yen	10,000 yen

Nihonbashi Life Science HUB

Room name	Area: m² (tsubo)	Capacity (number of persons)				Fee [excluding tax] (yen)/hour	
		Theater ^{*1} type	Classroom type	Square ^{*1} type	Island ^{*1} type	Special Membership A	Special Membership B
Conference room A	244.00 m² (about 73.81 tsubo)	180 persons	120 persons	102 persons ^{*3}	Negotiable	49,000 yen	24,500 yen
Conference room B	77.70 m² (about 23.50 tsubo)	70 persons	54 persons	36 persons	54 persons	17,000 yen	8,500 yen
Conference room C	44.40 m² (about 13.43 tsubo)	36 persons	30 persons	24 persons	27 persons	11,000 yen	5,500 yen
Conference room D ^{*2} (B + C)	138.20 m² (about 41.80 tsubo)	110 persons	81 persons	48 persons	Negotiable	28,000 yen	14,000 yen
Conference room E ^{*2} (A + B + C)	383.80 m² (about 116.09 tsubo)	300 persons	210 persons	152 persons ^{*3}	Negotiable	77,000 yen	38,500 yen

*1 Because a change in the layout is necessary, the fee for one hour's use of the room will be charged separately. (If the layout is to be changed by the customer during the reserved hours, no extra fee for changing the layout will be charged. Please restore the layout to the original state after use.)

*2 By opening the movable partition, the conference rooms (Conference Rooms D and E) can be used jointly.

If Conference room E (A + B + C) is used, the foyer can be used exclusively.

*3 Double reversed C-like layout

Foyer	153.40 m² (about 46.40 tsubo)	—	—	—	—	—	—
-------	-------------------------------	---	---	---	---	---	---

* Available for exclusive use only when Conference Room E (A + B + C) is used. The fee for the foyer is included in the fee for Conference Room E.

* Reservations for the preparatory meeting space are not accepted. Please do not use this space for extended periods except when using Conference Room E.

Nihonbashi Life Science Building 2

Room name	Area: m² (tsubo)	Capacity (number of persons)	Fee [excluding tax] (yen)/hour	
			Special Membership A	Special Membership B
Conference room 901	48.6 m² (about 14.7 tsubo)	24 persons	5,000 yen	2,500 yen
Conference room 902	18.1 m² (about 5.5 tsubo)	12 persons	3,500 yen	1,750 yen
Conference room 903	11.8 m² (about 3.6 tsubo)	6 persons	3,000 yen	1,500 yen
Conference room 904	11.8 m² (about 3.6 tsubo)	6 persons	3,000 yen	1,500 yen
Conference room 905	18.8 m² (about 5.7 tsubo)	12 persons	3,500 yen	1,750 yen
Conference room 906	7.8 m² (about 2.4 tsubo)	4 persons	2,000 yen	1,000 yen

*1 Layout changes are not accepted.

(If the layout is to be changed by the customer during the reserved hours, no extra fee for changing the layout will be charged. Please restore the layout to the original state after use.)